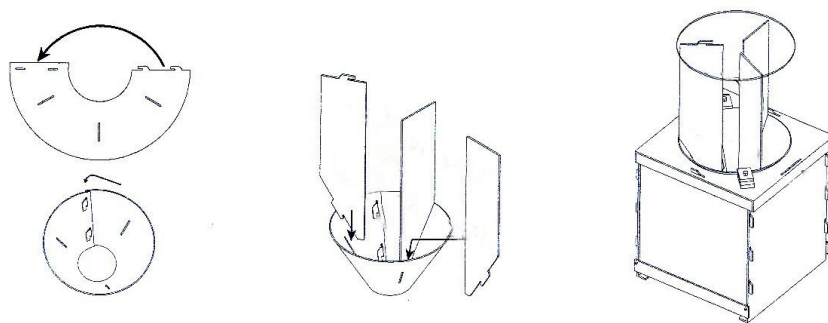
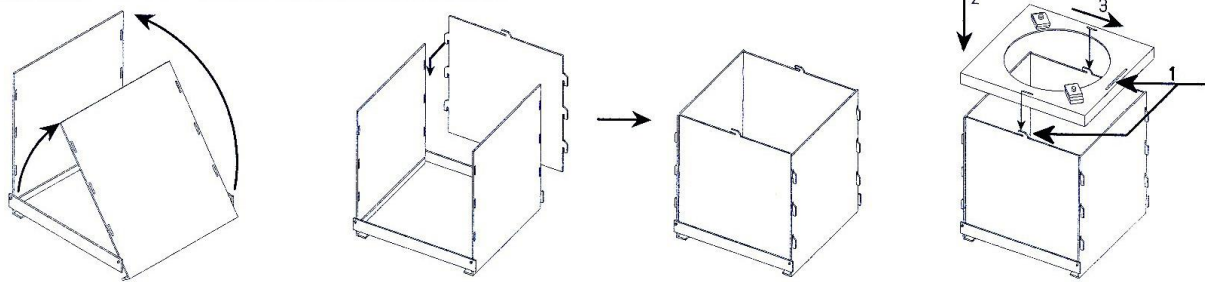
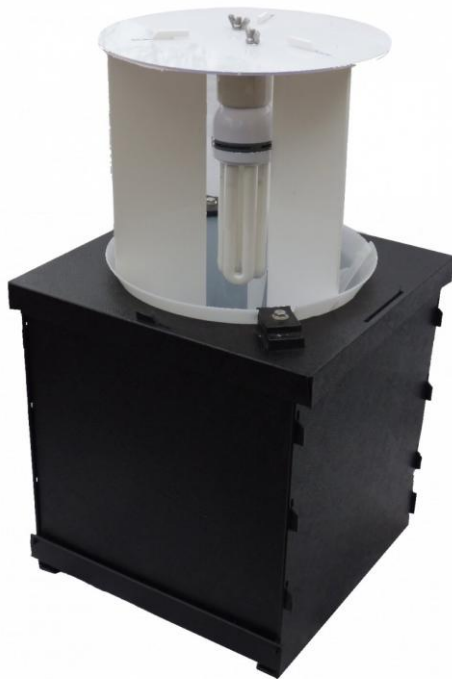


Compact 20W Actinic Heath Moth Trap (240V)

Thank you for purchasing the Compact 20W Actinic Heath Moth Trap (240V)

To assemble the trap please follow the below instructions and ensure that the lid with the slots sits as shown below. When forming the cone structure always connect the flanges to the outside of the cone.

To access the trap remove the cone and vanes in one piece.



Warning: This lamp can cause skin burns and eye inflammation from short-wave ultraviolet radiation if the outer envelope of the lamp is damaged in anyway. If the lamp is damaged in any way remove and replace. For personal safety we recommend the use of UV sunglasses if working next to the trap. UV sun block may also be necessary for sensitive skin. With all outdoor electrical components you may also want to consider using a circuit breaker (RCD switch) for your personal safety.

Using the trap:

For optimum results the trap should be left to run all night be switched on at dusk and off at dawn. Place egg cartons in the bottom of the trap, these will give the moths places to hide and help increase the retention rate of the trap.

After identification moths should be released over a fairly wide area, to help reduce bird predation. If you are releasing them in an area with a large amount of feeding birds, such as garden with a bird feeder it may be preferable to release the moths at dusk when fewer feeding birds will be active.

Care of the Bulb and Fittings:

- When fitting the bulb, ensure that it is handled at the base and not by the glass envelope as this can be fragile. Please fit the bulb after the three vanes have been put into place.
- Do not carry by the leads
- Do not coil the leads

Troubleshooting:

Bulb fails to light: This is likely to be caused by either a loose connection, blown fuse (3 amp) or faulty extension lead.

Faulty bulb: Replace lamp.

For useful tips on moth trapping and for helpful pictures of moths try www.ukmoths.org.uk.