

How to Configure your HD IP Bird Box Camera to Record to a Windows PC with iSpy

Modified on: Thu, 22 Aug, 2019 at 3:19 PM

NCIP2 NCIP9 NCIP2MAIN

Purpose of the Guide

In this guide, we will show you how to connect your HD IP bird box camera to iSpy, how to set it up to record onto your Windows PC, and how to set up a recording schedule and motion detection.

Before You Begin

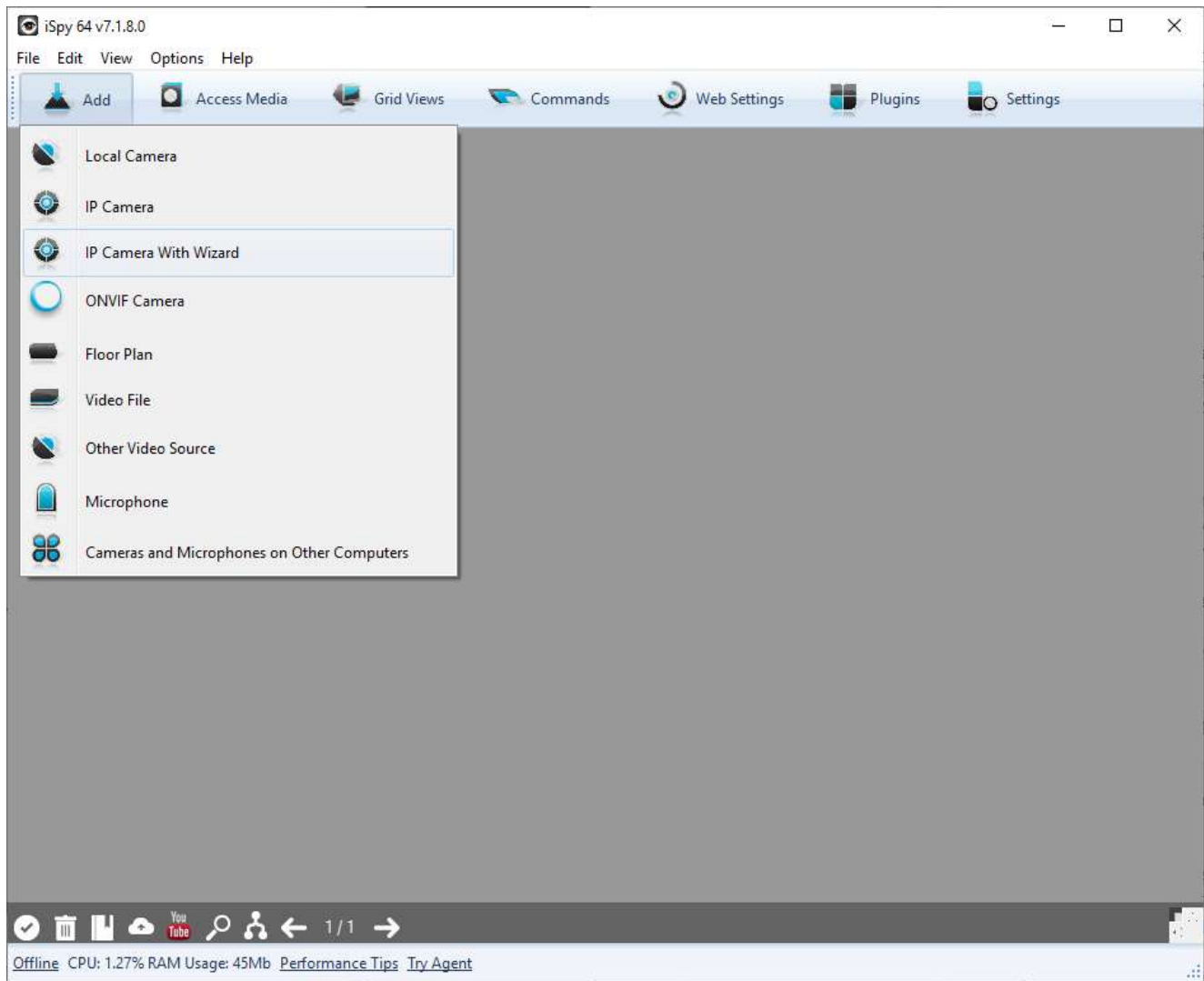
You will need a HD IP bird box camera, a windows PC and the program iSpy (click [this link](https://www.ispyconnect.com/download.aspx) (<https://www.ispyconnect.com/download.aspx>) to download and install it). Make sure that the camera is connected to your internet router before you begin.

Let's Get Started

Adding the camera to iSpy

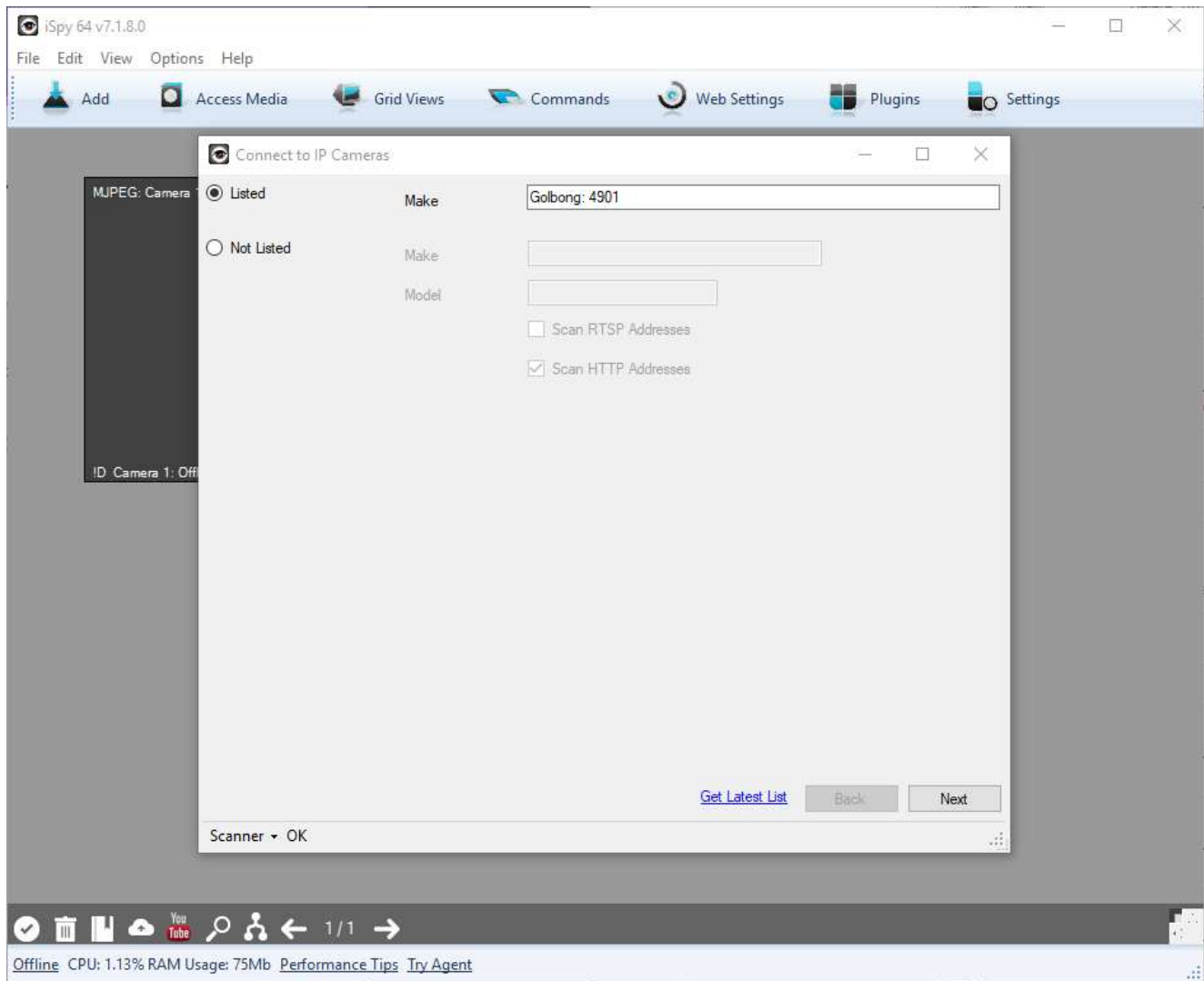
Open up iSpy and select **Add > IP Camera With Wizard**





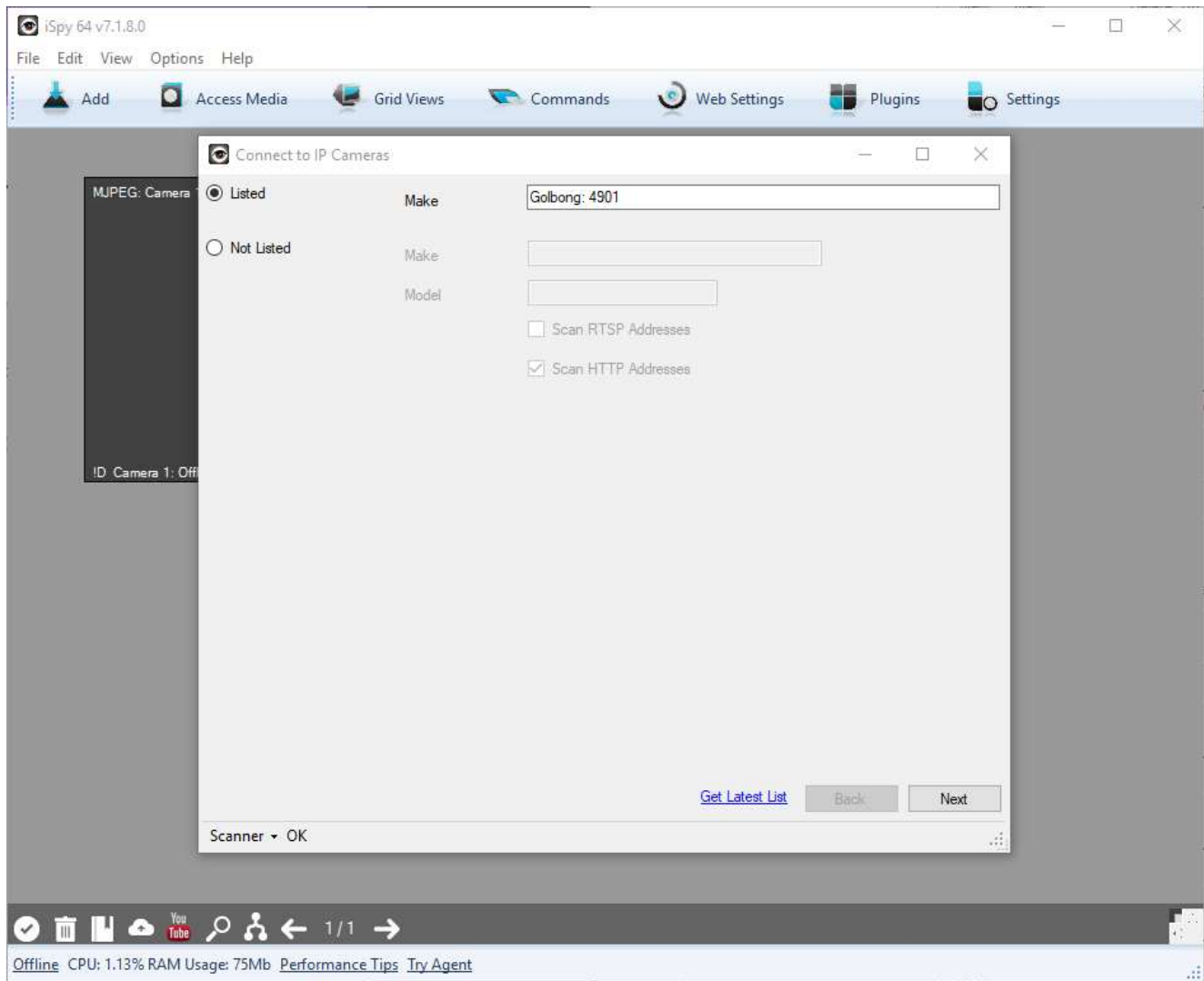
Type **Golbong: 4901** into the **Make** field then click **Next**





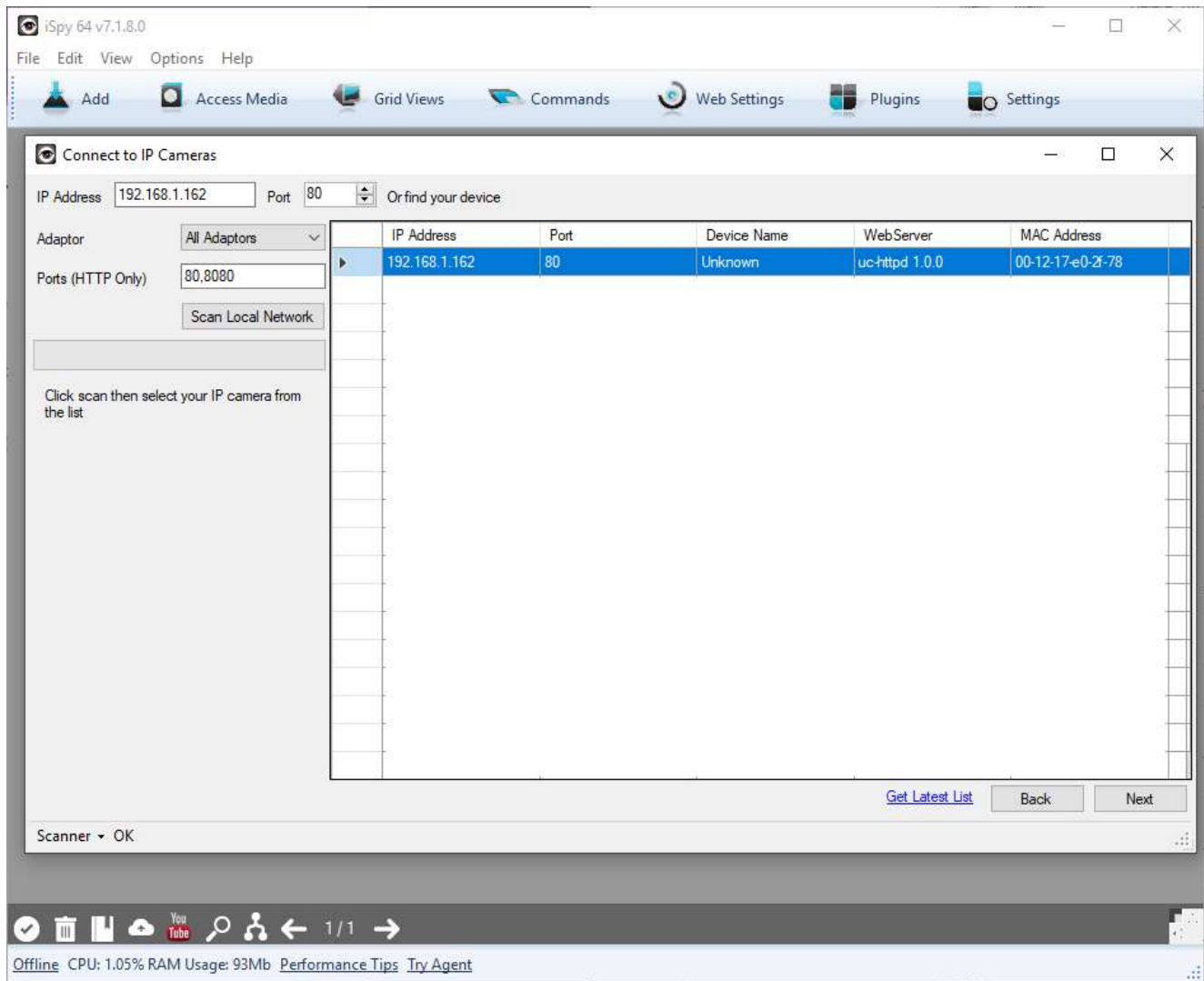
Enter the username and password you use for the camera. By default the username is **admin** and the password can be left blank. Channel can be left as **0**.



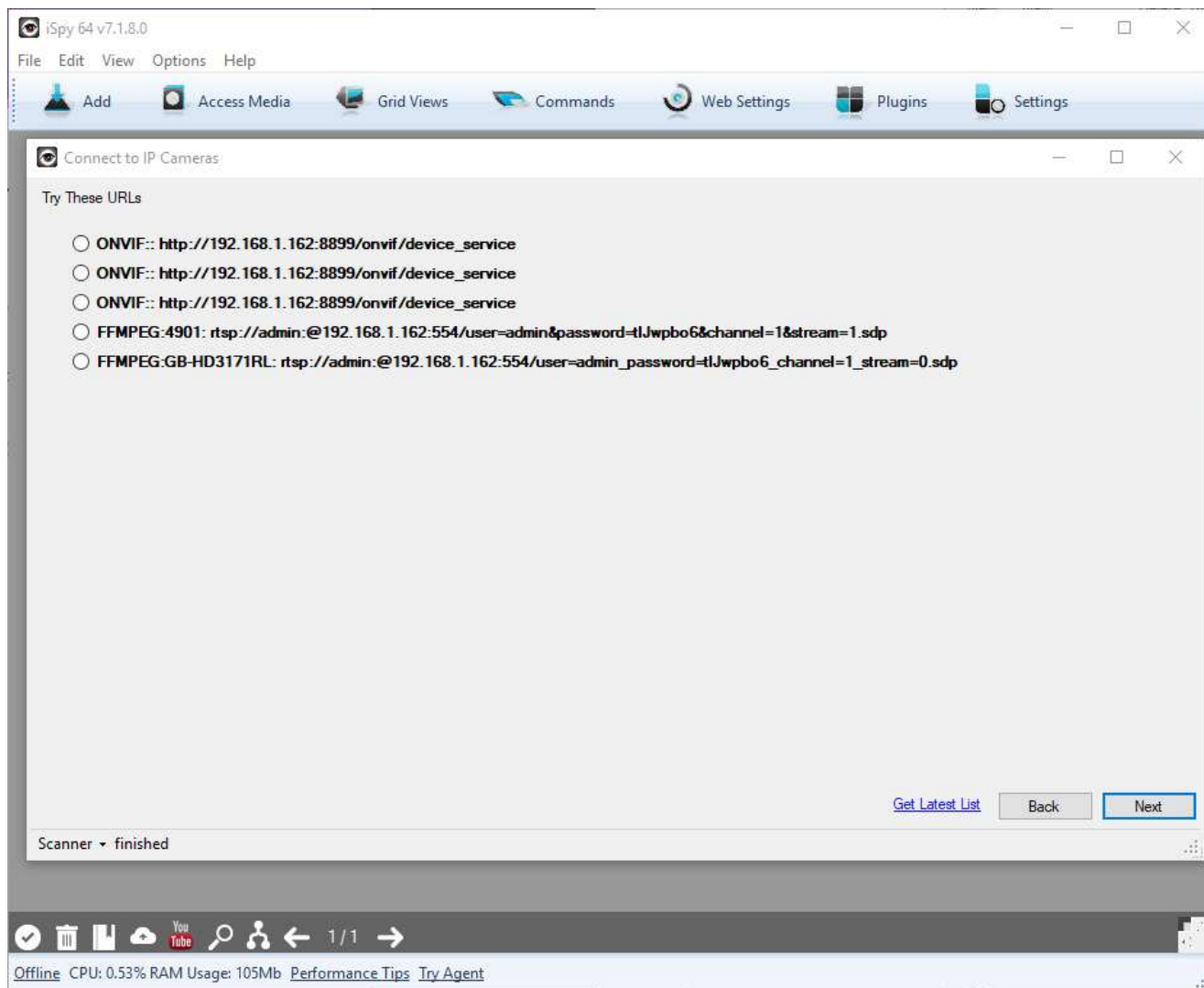


Click on **Scan Local Network** and wait until it finishes. You will see a list of all the devices connected to your network; the camera will have the Device Name **Unknown** and the WebServer **uc-httpd 1.0.0**. Select it and click **Next**.

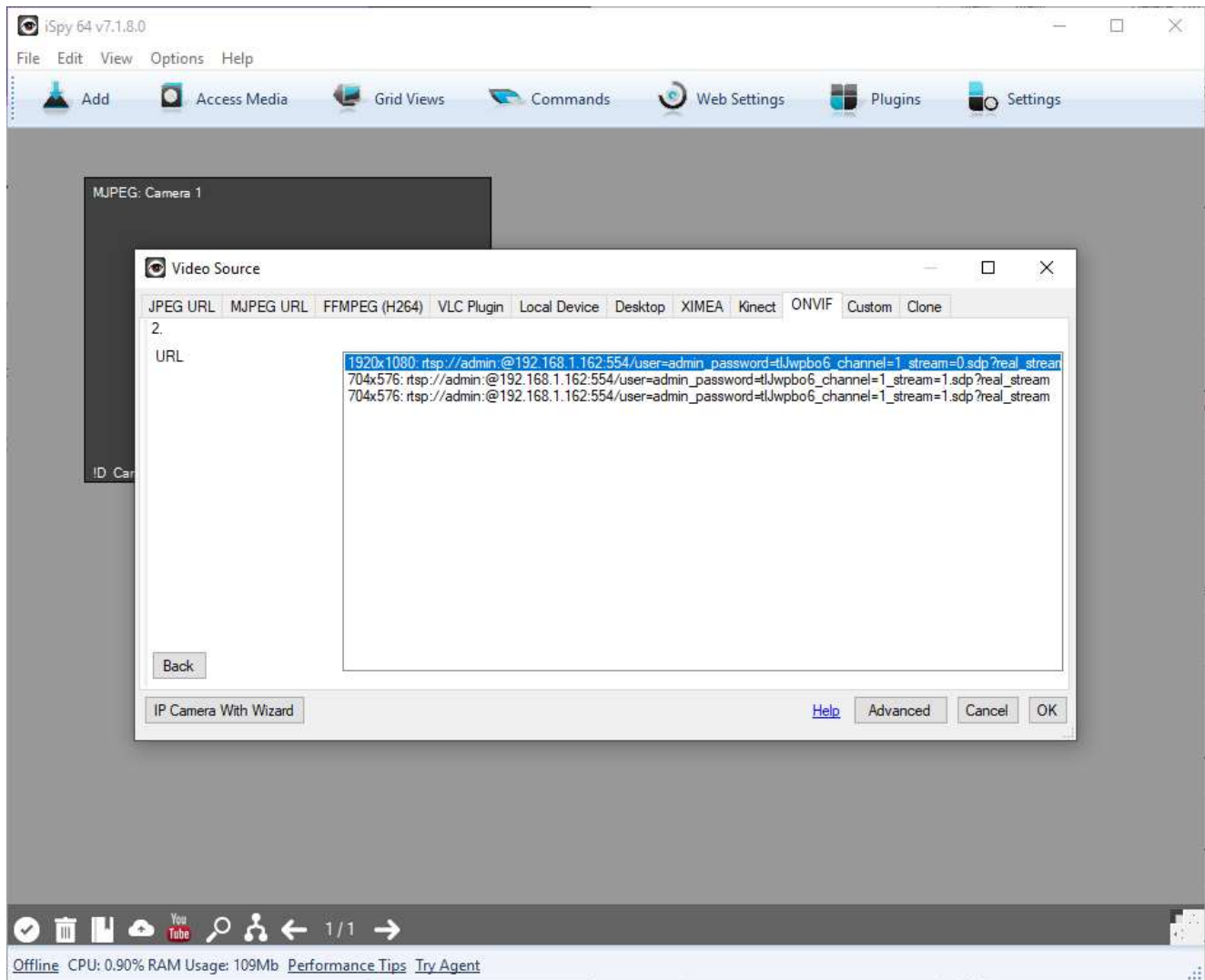




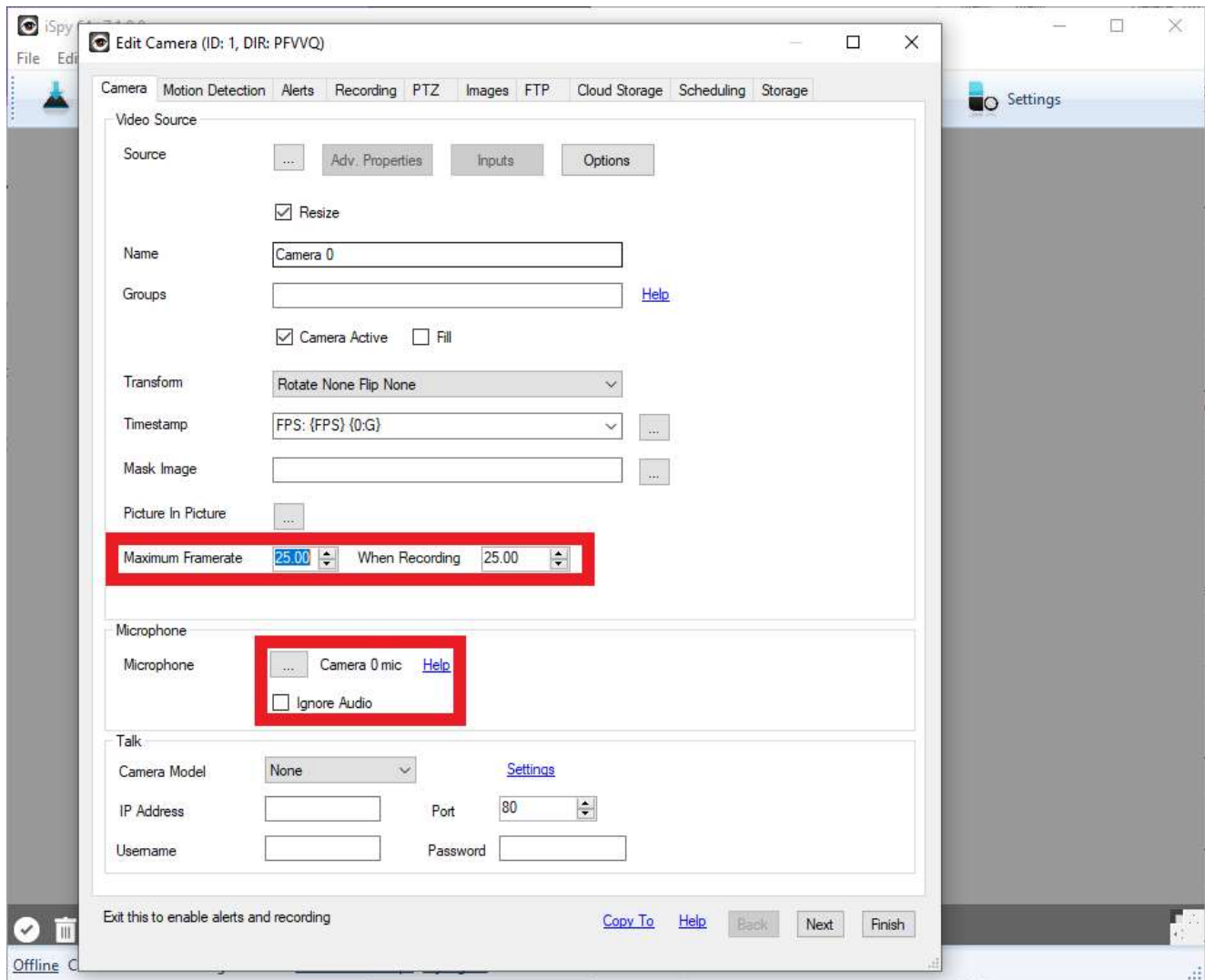
Select the first URL in the list and click **Next**.



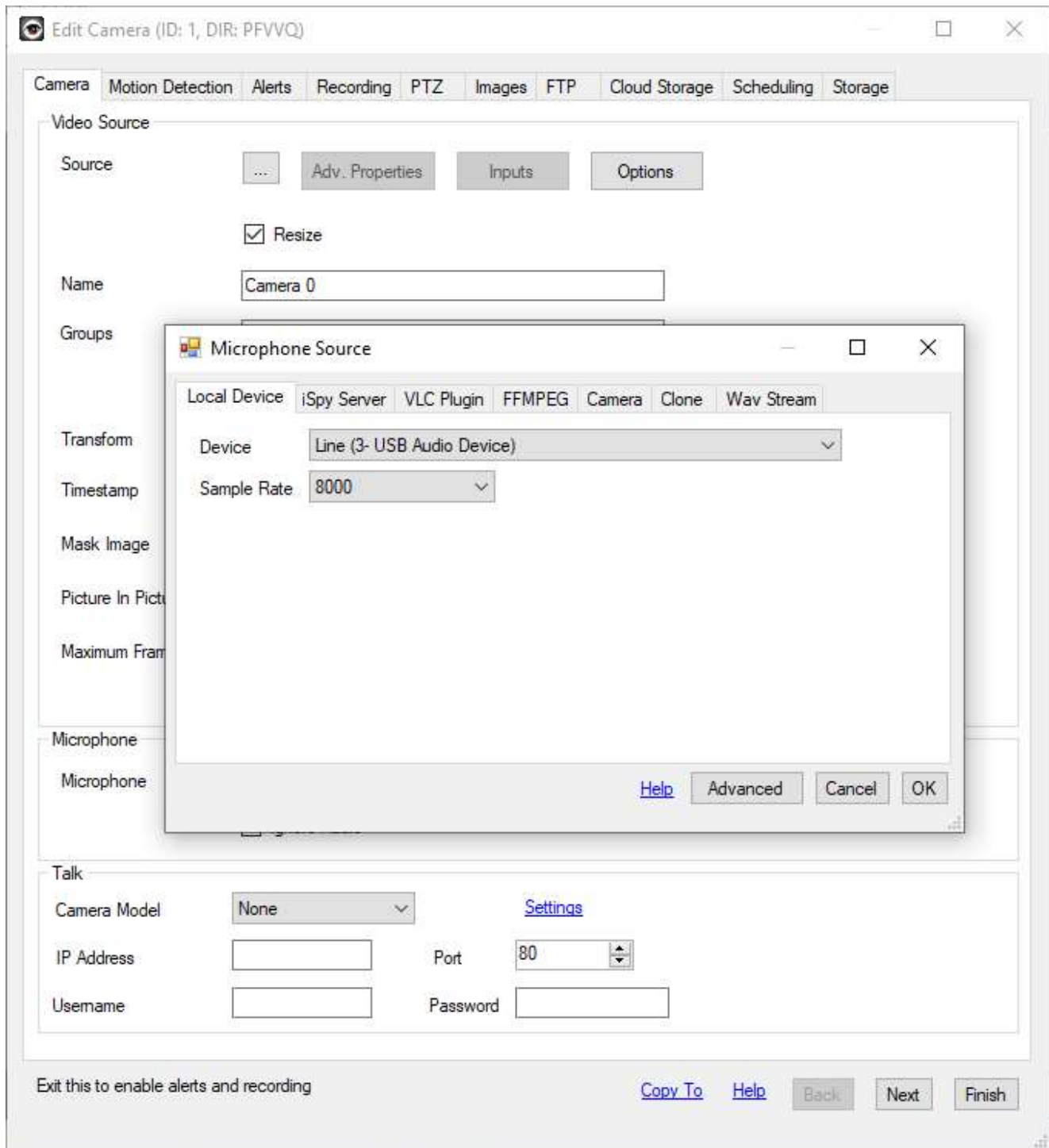
Click **Next** again.



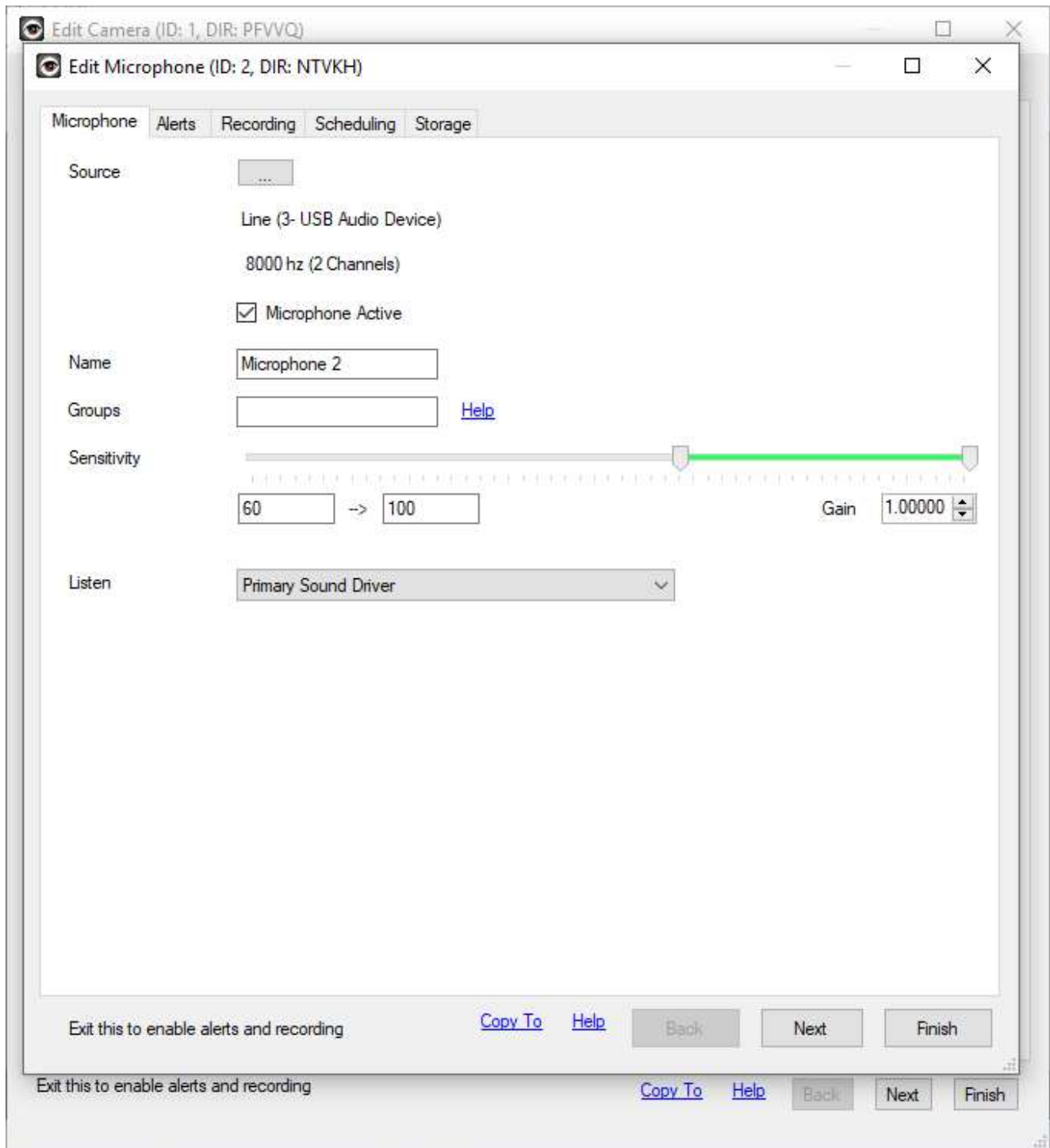
You will be taken to a final window where you can edit the camera settings. Step number one is to increase the maximum frame rate for live view and recording. We recommend the standard frame rate of 25 but you may want to experiment with this. Step two is to set up the microphone; once you have changed the frame rate click on the box next to the word **Microphone**.



Select **New** then click next. The microphone should be automatically selected as the **Device** under the **Local Device** tab. Click **OK**.

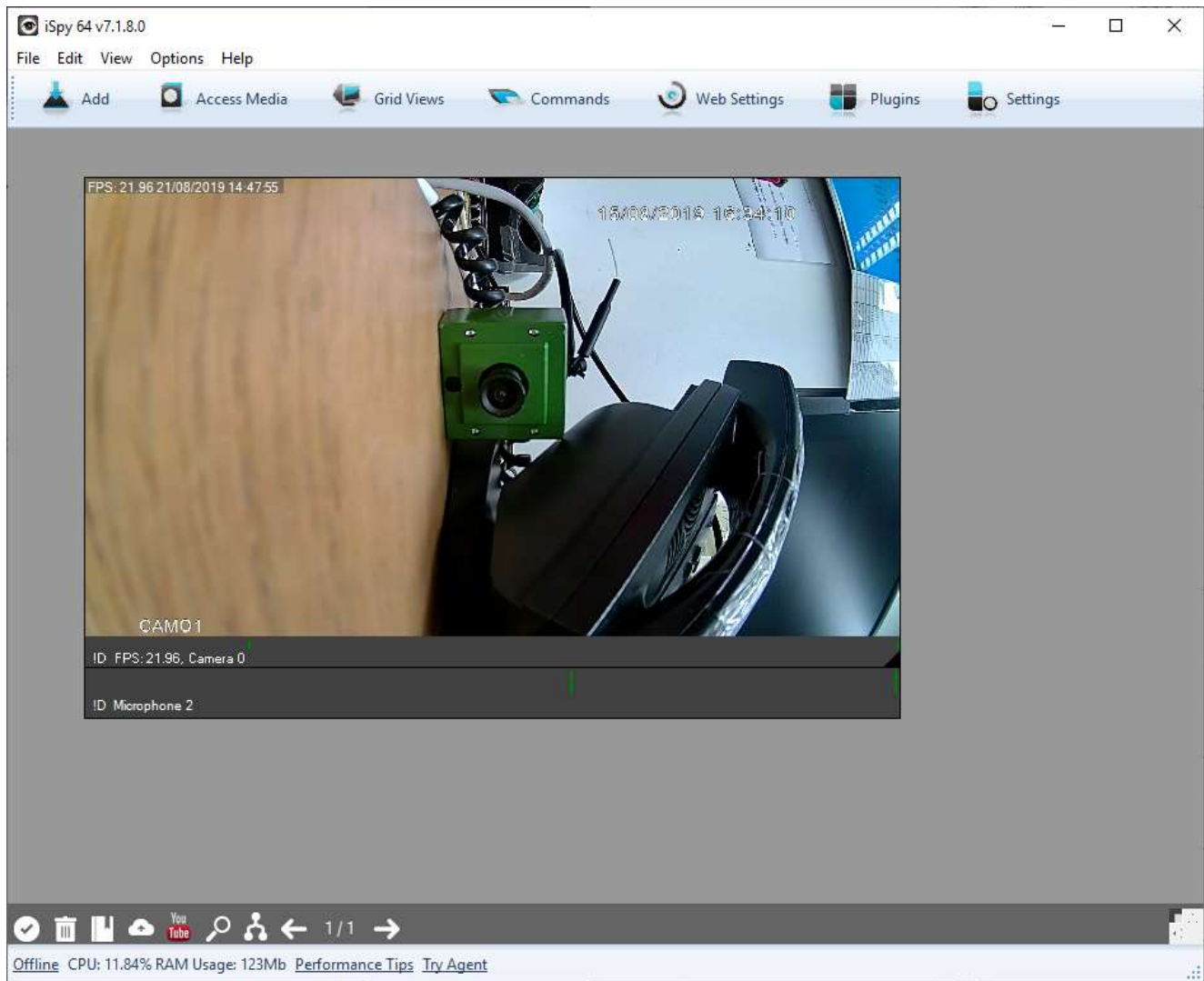


The next window allows you to change the microphone settings such as the sensitivity, most people can just ignore this and click **Finish**.



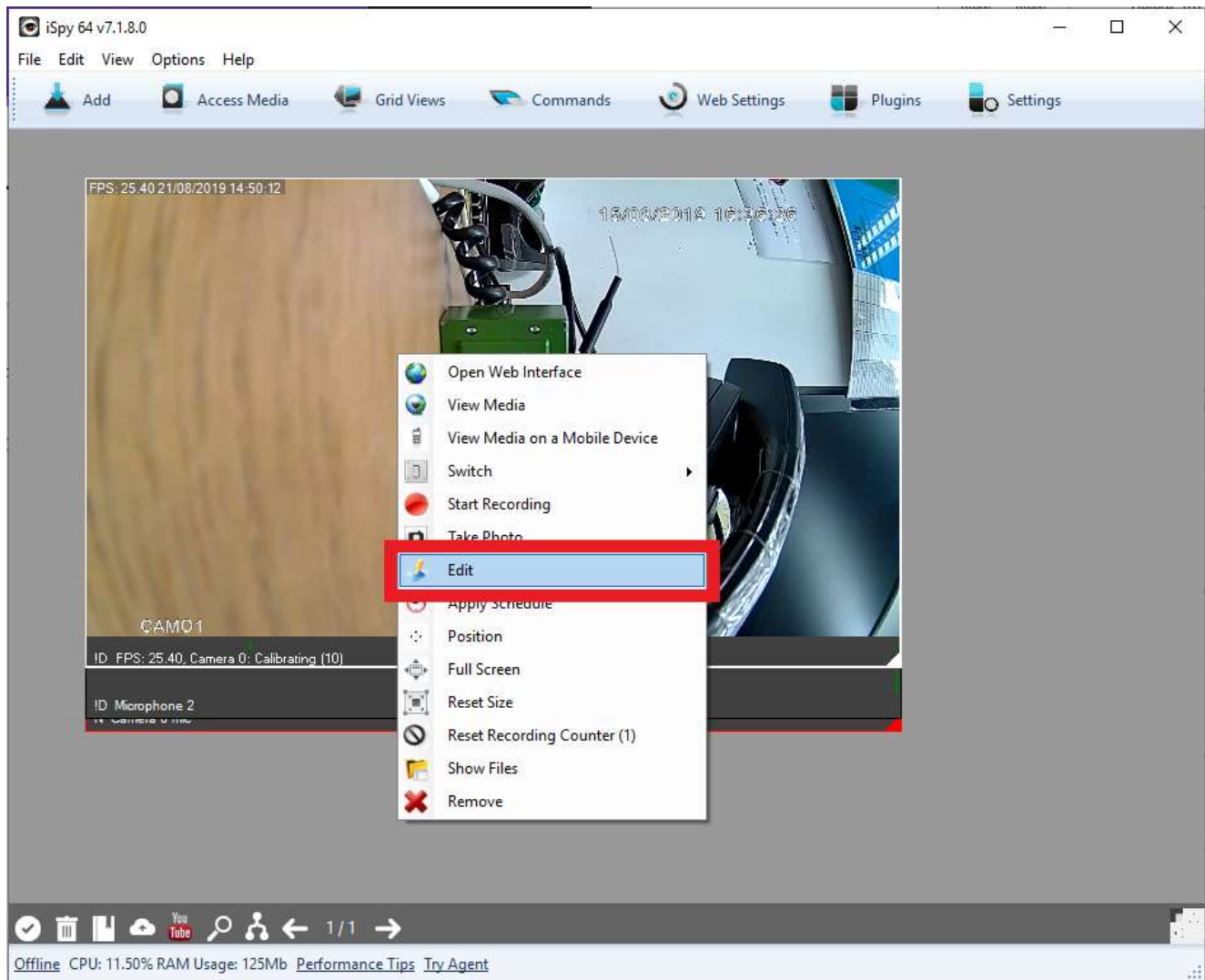
Finally, click **Finish** again and you should see your camera feed up and running!



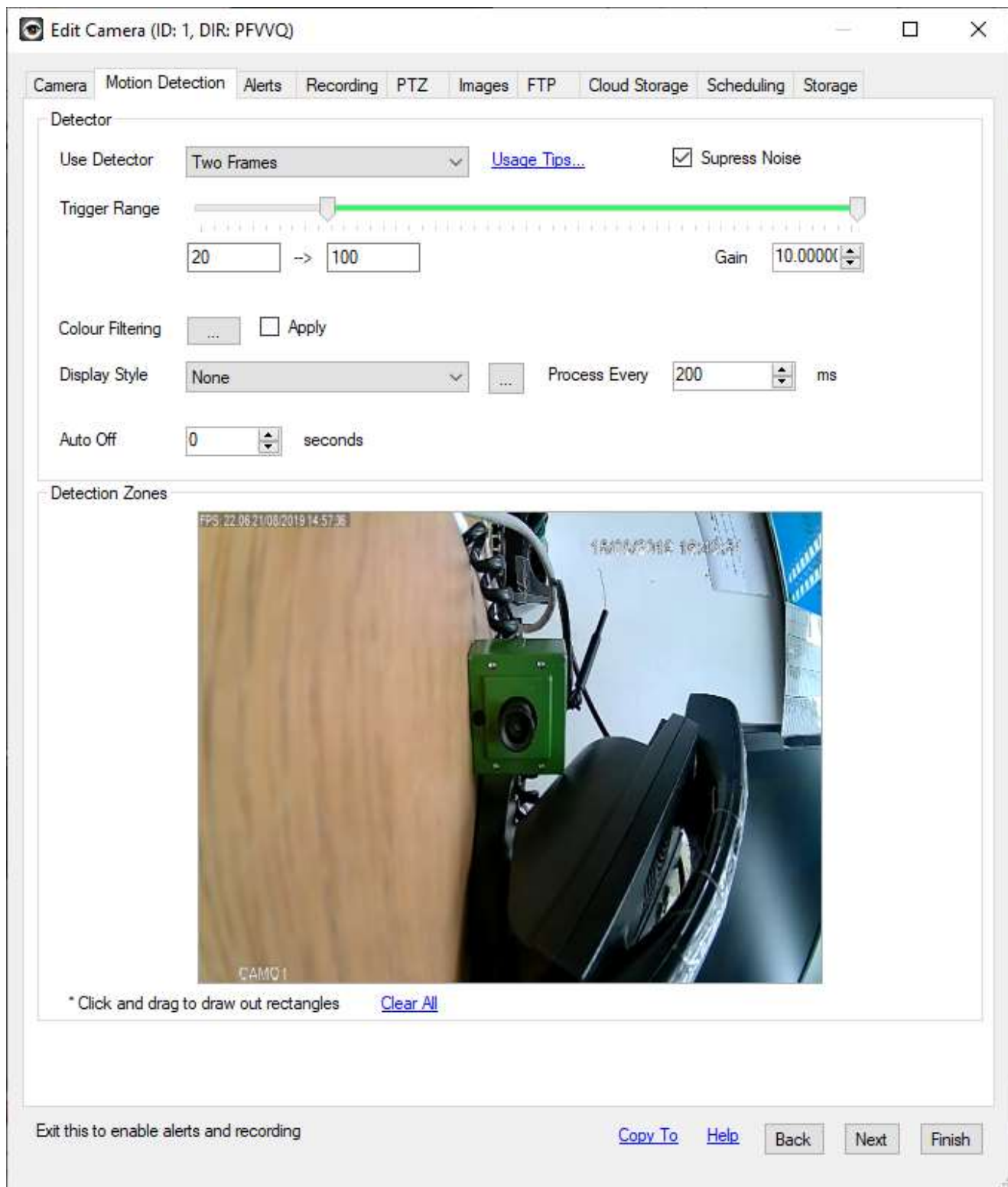


Setting up motion recording

Now we're going to activate motion recording! Right click on the camera feed and click **Edit**.



Select the second tab at the top called **Motion Detection**.



Detector Type is the method iSpy uses to determine if motion has been detected, I have pasted the descriptions from the iSpy website for each type:

Two Frames: Probably the most common type you would use. iSpy just compares the last frame to the current frame.

Custom Frame: iSpy stores one frame in memory and compares subsequent frames to this - good for detecting if things change - say someone takes a bag out of the scene.

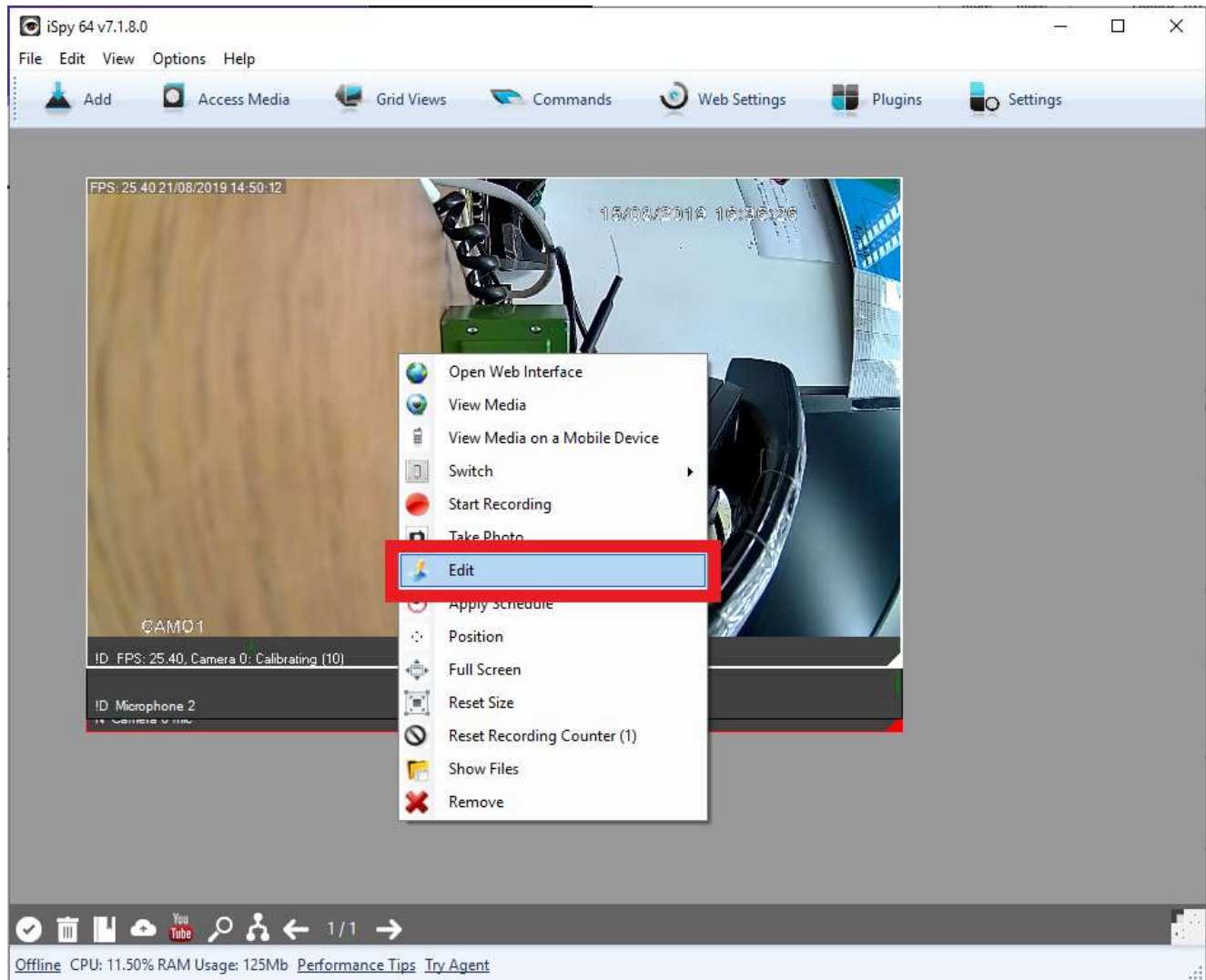
Background Modelling: iSpy takes a custom frame but adjusts it over time to morph it towards the current frame. This is good when you have something in your scene that is constantly moving - iSpy will learn to ignore it.

None: No motion detection, use this if you are just recording on a schedule or want to record a timelapse or record on demand.

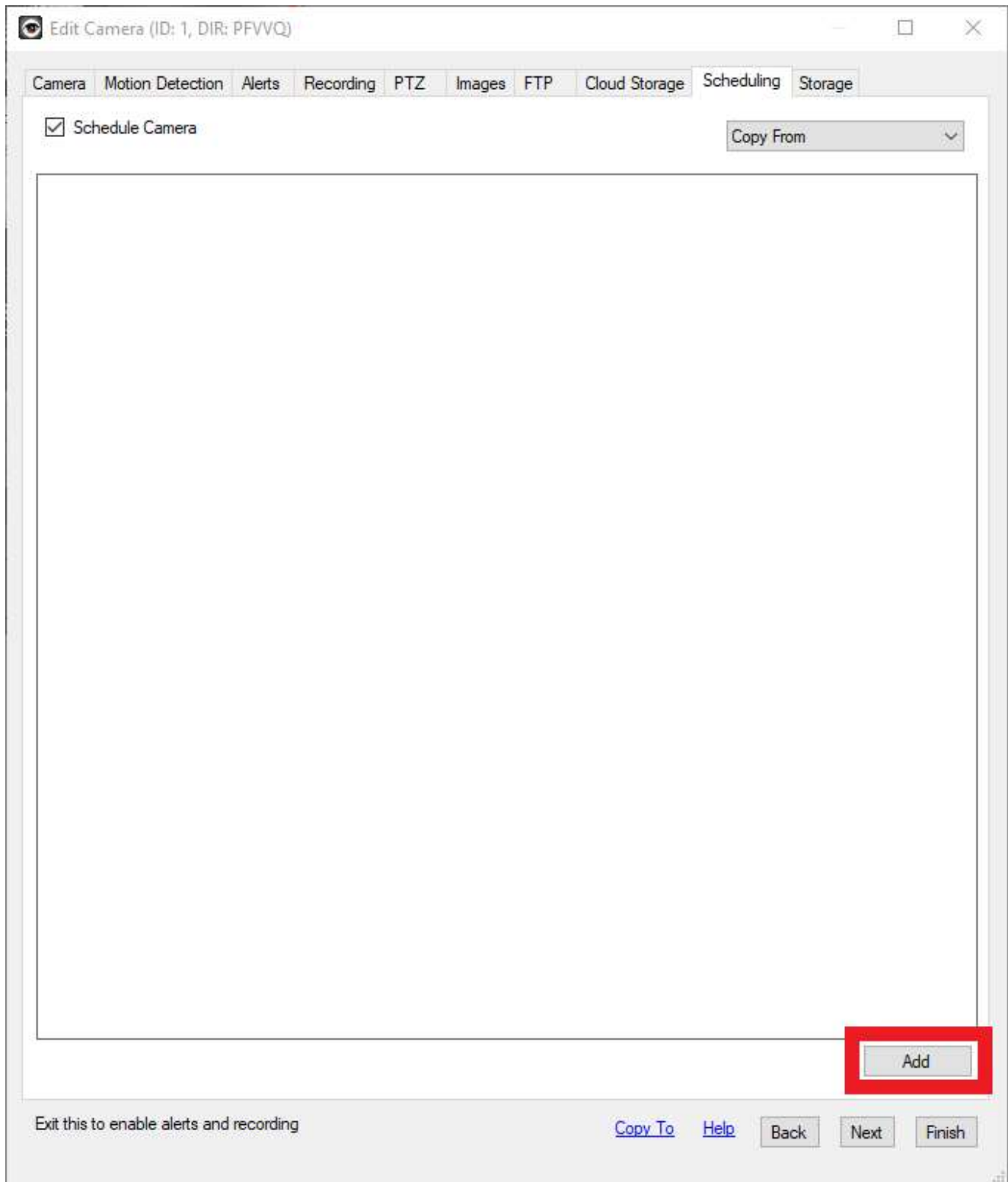
If you want to explore the full range of motion detection options available check out [this article](https://www.ispyconnect.com/userguide-motion-detection.aspx) (<https://www.ispyconnect.com/userguide-motion-detection.aspx>).

Setting up a recording schedule

Now let's set up a recording schedule; just like before right click on the camera feed and click **Edit**.

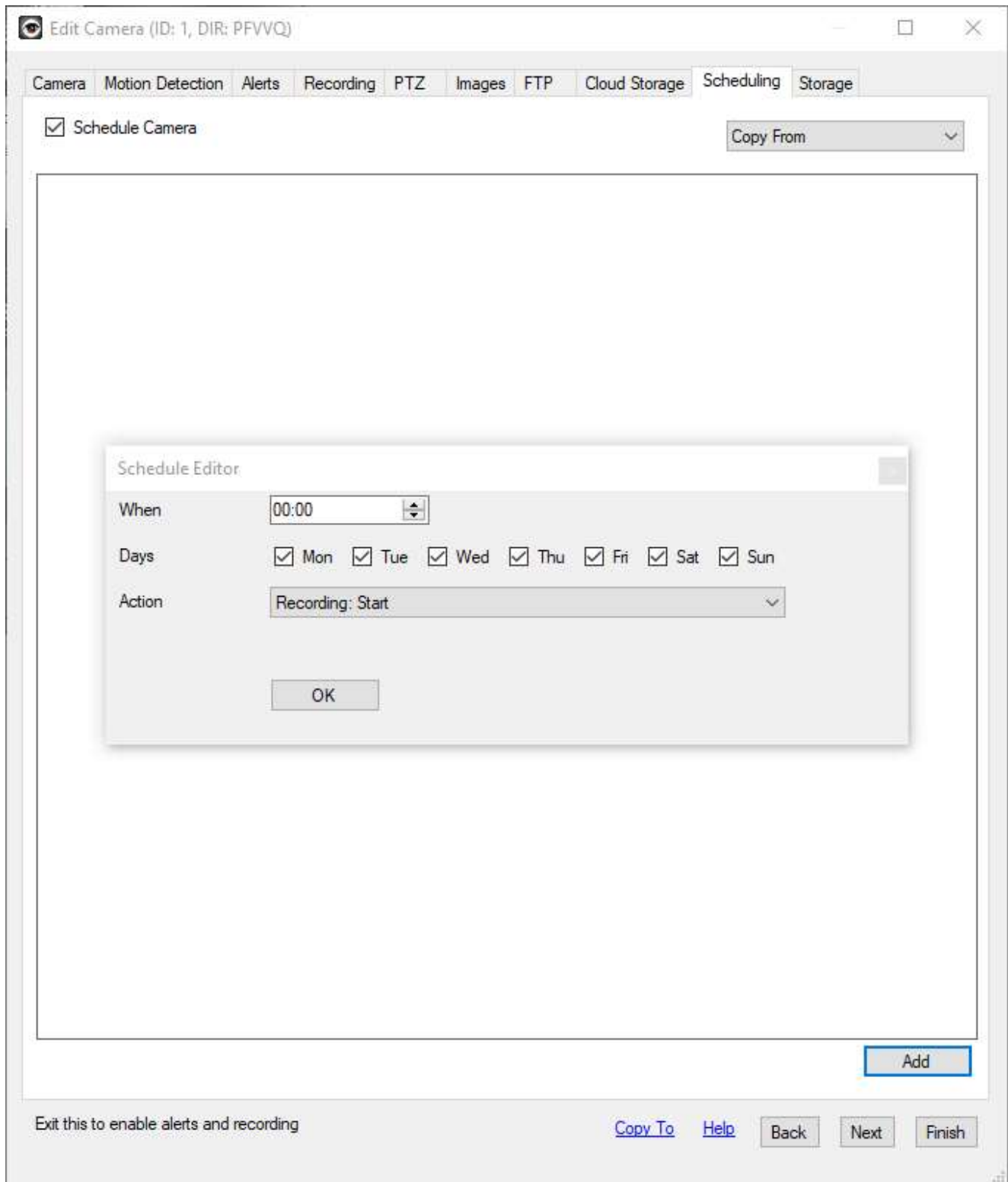


Now select the **Scheduling** tab at the top of the window and click **Add** at the bottom.



The **Schedule Editor** will now open. This allows you to select an action, the time of day it will be activated, and which days of the week it will apply to. I will be setting the camera up to record every single day of the week. In the screenshot below I have set the camera to start recording at the beginning of the day, and applied this setting to each day of the week.





Now we need to tell it when to stop recording; as you see in the screenshot below I have told it to stop recording at the end of the day, and applied it to every day of the week.



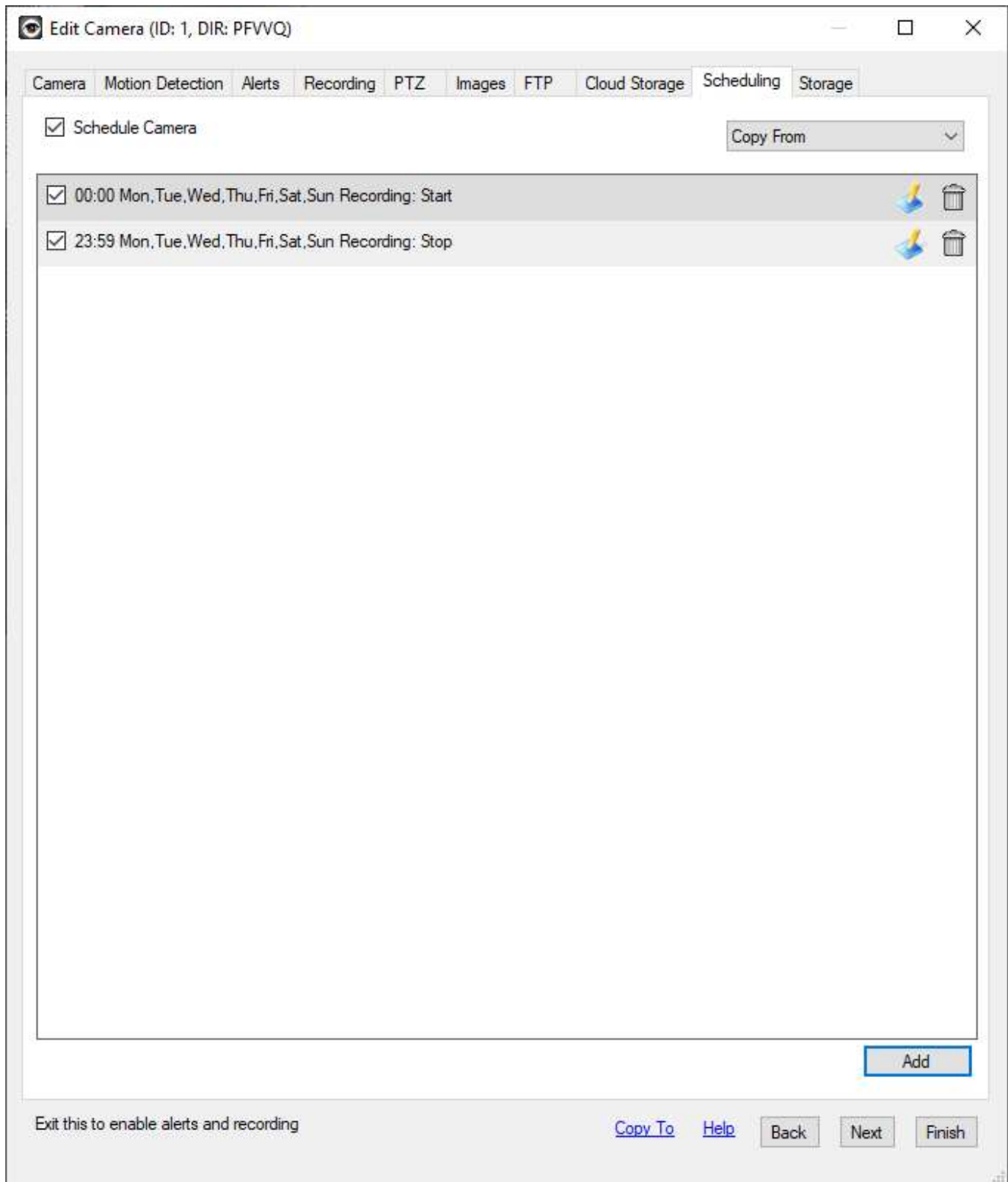
The screenshot shows the 'Edit Camera (ID: 1, DIR: PFVVQ)' window with the 'Scheduling' tab selected. The 'Schedule Camera' checkbox is checked. A 'Copy From' dropdown menu is visible. Below this, a schedule entry is listed: '00:00 Mon, Tue, Wed, Thu, Fri, Sat, Sun Recording: Start'. A 'Schedule Editor' dialog box is open in the foreground, showing the following settings:

- When: 23:59
- Days: Mon Tue Wed Thu Fri Sat Sun
- Action: Recording: Stop
- OK button

At the bottom right of the main window, there is an 'Add' button. At the bottom of the window, there are several buttons: 'Exit this to enable alerts and recording', 'Copy To', 'Help', 'Back', 'Next', and 'Finish'.

Now you see the two actions are listed below, showing that at a certain time on every day of the week it will begin recording, and at a different time it will stop recording. Just click on **Finish** and you will be taken back to the live view screen.

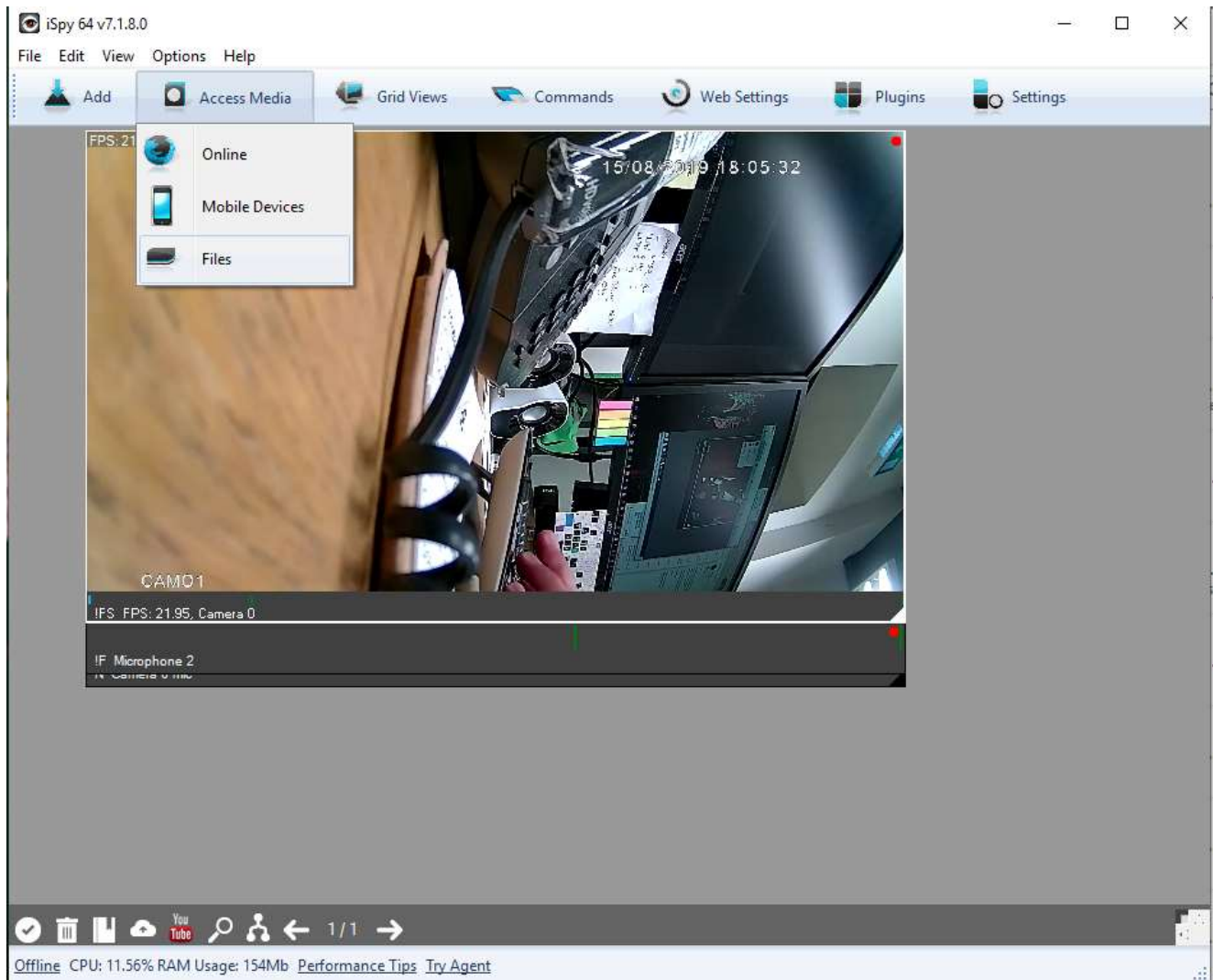




If you want to configure the scheduling to a greater depth, I recommend you look at this article on the iSpy website which goes into further detail.

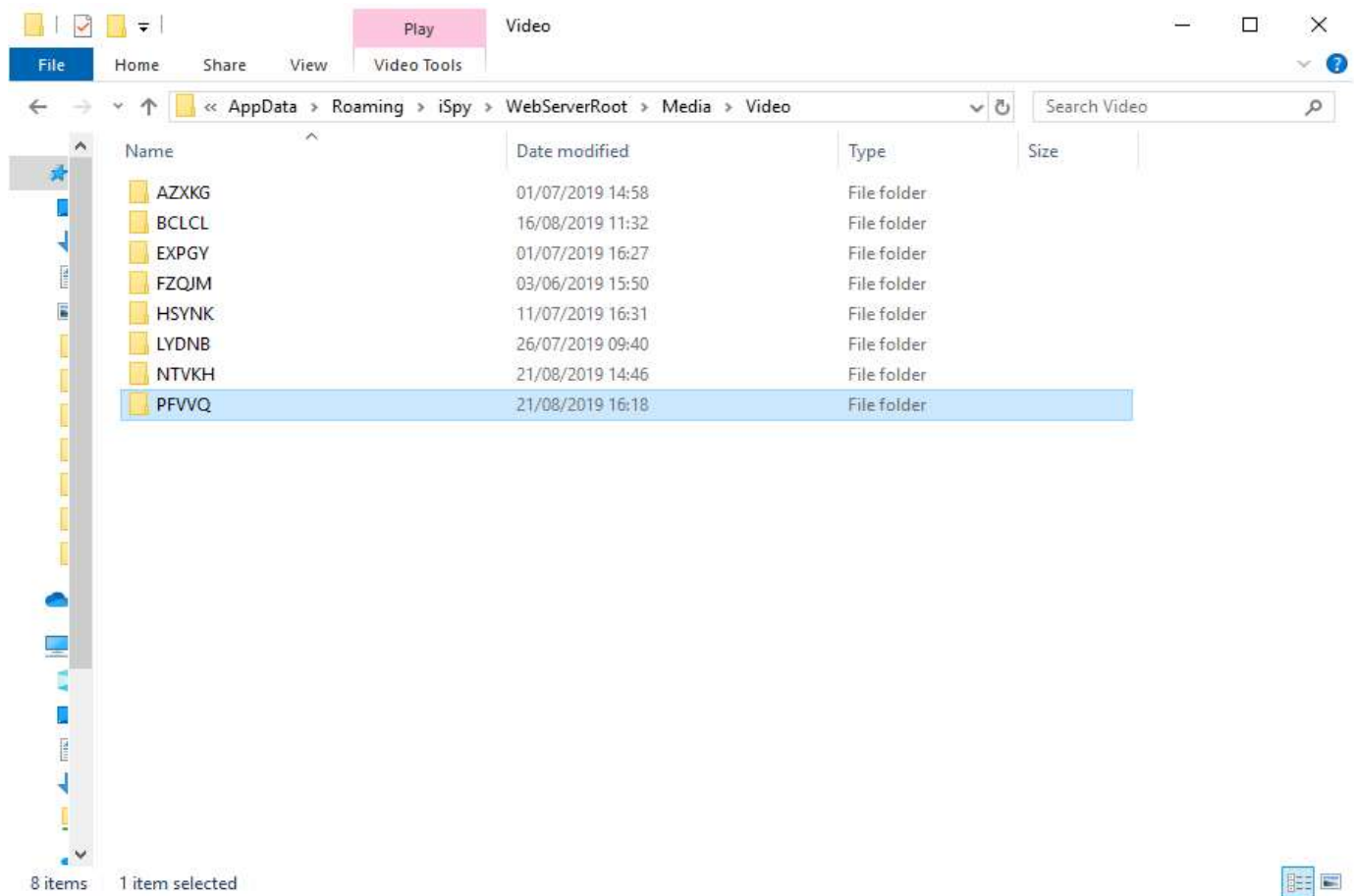
Your camera should now be fully configured to record now. To view the files it records you need to click on **Access Media** then **Files**.





The folder containing the files will be opened up, when you open the **Video** folder you will find a list of folders with random strings of letters for names. Just sort them by **Date Modified** to organise them by date.





Next Steps

For further information about the numerous features this program has I recommend you look at the **[iSpy user guide](https://www.ispyconnect.com/userguide.aspx#1)** (<https://www.ispyconnect.com/userguide.aspx#1>).

We hope you have found this guide useful. If it has not answered your question you can see related articles on the right or raise a ticket.

